

HC-20302T

BRASS BIBCOCK WITH CHECK VALVE

PN16

Feature and Benefits

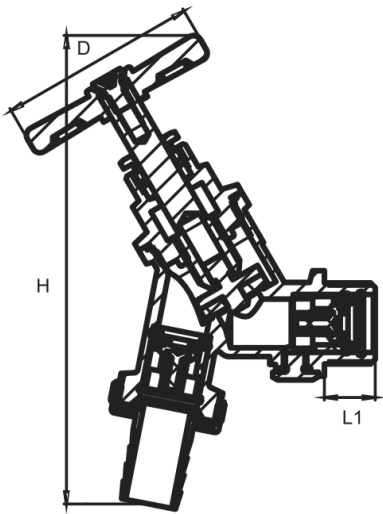
- WRAS certified
- Europe Brass DZR
- BS1010-2 standards
- Brass Hose Union Bib Tap with Double Check Valve – includes nut and tail.
- Suitable for cold water systems.

Connection Standard

- ISO228-1 parallel thread
- Medium: Water

Test Pressure and Temperature

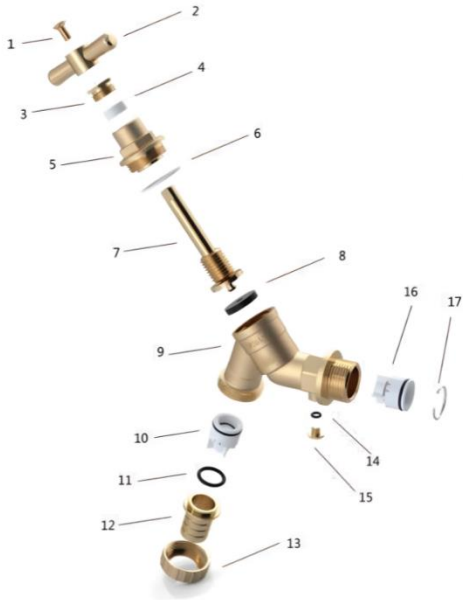
| Temperature | Hydraulic |
|-------------|----------------|
| 5°C to 90°C | Shell: 24 bar |
| | Seat: 17.6 bar |



Installation Dimensions

| Size" | L1(mm) | H(mm) | D(mm) |
|-------|--------|-------|-------|
| ½" | 13 | 74 | 69 |
| ¾" | 15 | 74.3 | 105 |

Materials



| NO | PART | Material |
|----|-------------------|-----------|
| 1 | Screw | Brass |
| 2 | Handle | Brass |
| 3 | Lock cap | Brass |
| 4 | Flat Washer | PTFE |
| 5 | Bonnet | DZR Brass |
| 6 | Seats | PTFE |
| 7 | Stem | Brass |
| 8 | Washer | EPDM |
| 9 | Body | DZR Brass |
| 10 | Anti-return core | / |
| 11 | O-ring | EPDM |
| 12 | Nozzle | Brass |
| 13 | Pressing Nut | Brass |
| 14 | O-ring | EPDM |
| 15 | Screw | Brass |
| 16 | Anti-return core | / |
| 17 | Internal circlips | Steel |

Pressure and Temperature Ratings

- Constant pressure of 10 bar maintained.
- Stable range between 0 °C–80 °C.
- Pressure decreases beyond 80 °C.
- Reaches zero pressure at 90 °C.
- Defines safe operating temperature limits.

